

LUXURY 18 SEATER

Now available in 2.5L & 3.0L CDTi



Your Spacious Trip!

MOBILISING YOUR BUSINESS SINCE 2009.

STYLING

LUXURY 18 SEATER



HALOGEN
PROJECTION
HEADLAMP

LED DAYTIME
RUNNING LIGHT

CHROME FINISH
POWER SIDE MIRROR

LARGE &
COMFORTABLE
LEG SPACE



FOLDABLE REAR SEAT FOR EXTRA STORAGE SPACE



TWIN POT BRAKE CALIPER FOR
IMPROVED BRAKING PERFORMANCE

SPORTY 16" ALLOY RIM** **available on 3.0L engine only



3 POINT SEATBELT

DRIVING



OPERATION CENTRAL



6 SPEED MANUAL**

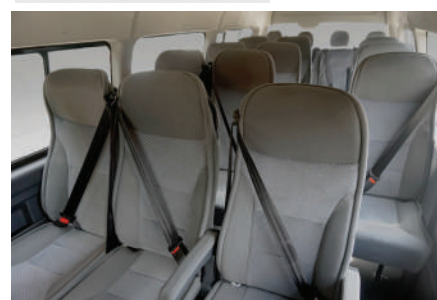


MULTIMEDIA PLAYER WITH REVERSE CAMERA



SPEEDOMETER

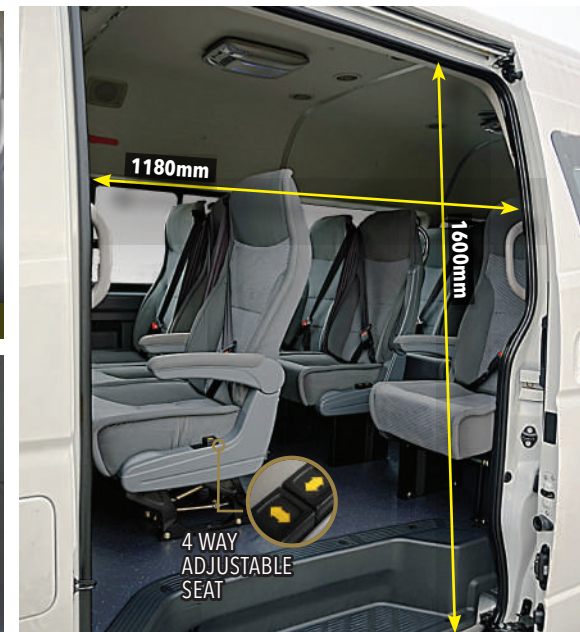
INTERIOR



18 AERO SEATS



DOUBLE REAR A/C UNIT WITH 9 ROOF VENTS



WIDE OPENING SLIDING DOOR

POWERTRAIN

GREEN DIESEL ENGINE
EURO III

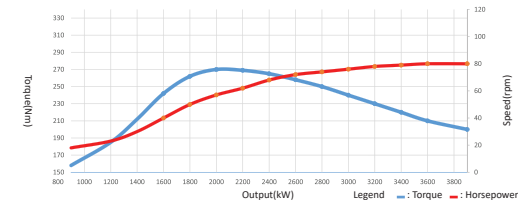
**JAPANESE
TECHNOLOGY**

DISPLACEMENT	2.5L	3.0L
RATED OUTPUT (kW(HP)/rpm)	100.6 (137)/ 3800	110 (149)/ 3400
MAX TORQUE (N.m/rpm)	322.2/ 1800-2600	350/ 1800-2600
COMPRESSION RATIO	18.5:1	17.3:1



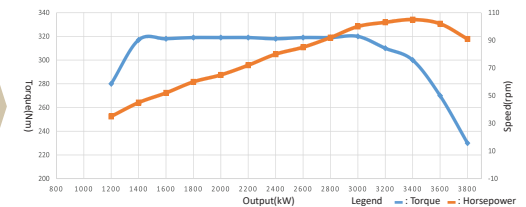
HIGH CAPACITY TURBO CHARGER

To achieve the maximum power & torque by lower engine capacity and hence improve fuel efficiency



**DK4
ENGINE**

**DK5
ENGINE**

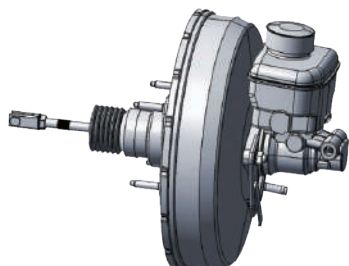
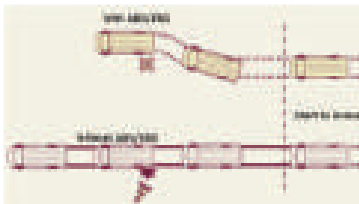


TRANSMISSION		GEAR RATIO						
		1	2	3	4	5	6	R
2.5L	5 SPEED MANUAL	4.313	2.330	1.436	1.000	0.838	-	4.220
3.0L	6 SPEED MANUAL	4.313	2.330	1.436	1.000	0.838	0.696	4.220

ACTIVE SAFETY

ABS (ANTI-LOCKING BRAKE SYSTEM)

Keeps wheels from locking and skidding while braking. It improves Placer-X's control and maximizes braking effects on various road conditions, speed, loading etc. to maximize stopping power.



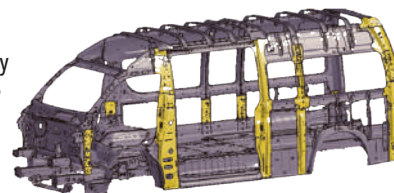
INTELLIGENT BRAKE ASSISTANCE SYSTEM

Commonly equipped in luxury sedan car will automatically responses to emergency shorten the braking distance.

PASSIVE SAFETY

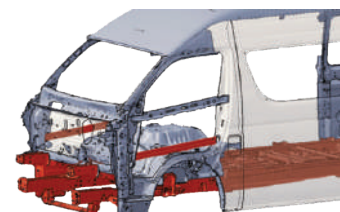
BODY FRAME

Anti-overtun body frame made of strengthened substantially improves body firmness and reduces noise and vibration during driving.



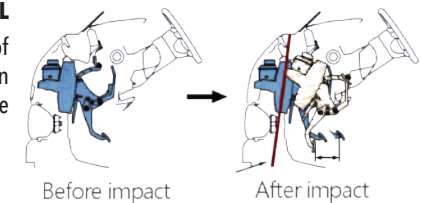
CRUMPLE ZONES

The Placer-X's crumple zones construction combined with upper, lower and side impact beams will absorb the collision energy for class-leading safety.



ENERGY-ABSORBING DEVICE OF BRAKE PEDAL

This limits the degree of the brake pedal intrusion towards driver to minimize injury of legs.



ENERGY-ABSORBING DEVICE OF STEERING COLUMN

In frontal collision, the steering column will contract at several points and away from driver to minimize the risk of injury.



CAM PLACER-X

2.5L

3.0L

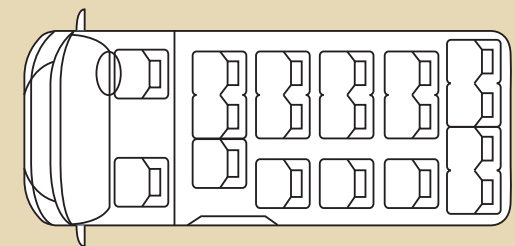
ENGINE		
Engine	DK4B1	DK5
Engine Type	In Line 4 Cylinder, 16-valve, DOHC, Turbo Intercooler	
Bore x Stroke	92x94	96x103
Emission Standard	EURO-III	
Displacement (L)	2.498	2.982
Rated Output (kW(HP)/rpm)	100.6(137)/3800	110(149)/3400
Max. Torque (N.m/rpm)	322.2/ 1800-2600	350/1800-2600
Compression Ratio	18.5 : 1	17.3 : 1
Top Speed *	155km/h	170km/h
Fuel Standard	Diesel	
Fuel Tank Capacity	70 Litre	
DRIVING SYSTEM		
Transmission Type	Manual 5 Speed	Manual 6 Speed
Gear Ratio	1st: 4.3134, 2nd:2.330, 3rd: 1.4364, 4th: 1.0000, 5th: 0.838, 6th: 0.696, Reverse: 4.220	
Clutch	Single disc, Hydraulic Control	
Driving Type	4x2 (Rear Wheel Drive)	
Brake System	ABS+EBD, Intelligent Brake Assistance System	
	Front Mono Pot Disc; Rear Drum	Front Double Pot Disc; Rear Drum
Suspension	Front Double Wishbone Independent Suspension, Rear Variable Rate Leaf Spring	
TECHNICAL DIMENSION		
Overall LxWxH (mm)	5990 x 1880 x 2285	
Wheelbase (mm)	3720	
Ground Clearance (mm)	155	
Gross Vehicle Weight (kg)	4000	
Curb Weight (kg)*	2500	
Seating Capacity	18 Seats	
Tire	215/75R 16C Local Tire	
Minimum Turning Radius (m)	12.5	
FEATURES AND ACCESSORIES		
DVD Player 6 Speakers	✓	✓
Reverse Camera	✓	✓
Reverse Sensor	✓	✓
Ion Air Purifier	2 Units	
Aero Seat - Fabric	✓	✓
Last Row Hanging Seat	✓	✓
Intermittent Front Wiper, Rear Wiper	✓	✓
Rear Defrost	✓	✓
Tilttable Steering wheel	✓	✓
Remote Control with Central Locking	✓	✓
Chrome-Plated Power Wing Mirror	✓	✓
High-Mounted 3rd Brake Lamp	✓	✓
Alloy Rim, 16 Inches	✓	✓
UV-locking Windshield	✓	✓
Air-Conditioner - Front	✓	✓
Air-Conditioner - Rear	Centre Unit with 9 Cabin Roof Vents	
Middle Glove Box	✓	✓
Luxury PVC Roof	✓	✓
Double Rear Evaporator	✓	✓
4 Sliding Window	✓	✓
PVC Floor Mat	✓	✓
Power Window - Driver & Co-driver	✓	✓
Anti-glare Rear View Mirror	✓	✓
LED Headlights	✓	✓
Seat Belt	3 Point Seat Belt	

Suitable for private & commercial use, first choice for trip & travel



GOLD AWARD : THE PREFERRED VEHICLE BY TOURISM INDUSTRY

BESTSELLER
18
SEATER
VAN IN MALAYSIA



5 YEARS or 200,000KM WARRANTY*
Whichever comes first

C.A.M
CONSISTENT | ACTIVE | MOBILE
www.cammalaysia.com.my



Sendok Group



NATIONWIDE SERVICE CENTRE

Distributor:
R&A MARKETING SDN BHD

Sendok Group Building, Lot 1564,
Batu 4, Jalan Kapar, 42100 Klang,
Selangor Darul Ehsan, Malaysia

Email: info@sendokgroup.com Fax: +03-3291 9658

Tel: +603-3345 5600

CAM Malaysia

Branch / Dealer Chop :

* Data collected under testing condition. The result may differ due to different driving condition, overall vehicle weight etc.

Disclaimer: All features & specification shown in this brochure are subject to change without prior notice and may vary according to locality. The colour(s) of the vehicle(s) and the interior shown herein may slightly differ from actual vehicle.